



OFF-ROAD

URETHANE WHEEL CHOCKS

Checkers' 1800 Series Roadblocks™ Wheel Chocks are specifically designed for the mining and construction industries. They are strong, safe and lightweight yet hold the largest haul trucks. RoadBlocks Off-Road Urethane Wheel Chocks are made from tough, damage resistant polyurethane. They will not cause tire damage and are virtually unaffected by oils, fuels or solvents. For added safety and convenience, "How to Use" guidelines are molded into the back of each chock.



1800 SERIES

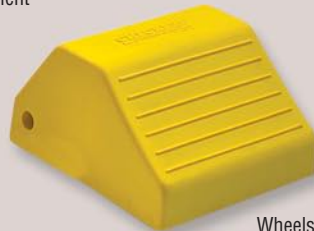
- Tough Polyurethane Construction
- Resistant to Oils, Fuels and Solvents
- Mounting Hole for Ropes, Chains or Brackets
- Replaceable Rubber Anti-slip Traction Pads
- Molded-in "How to Use" Guidelines
- Safety Yellow Caution Color
- Recessed Carrying Handle

MODEL 1812
Recommended for
Wheels Over 105" Diameter

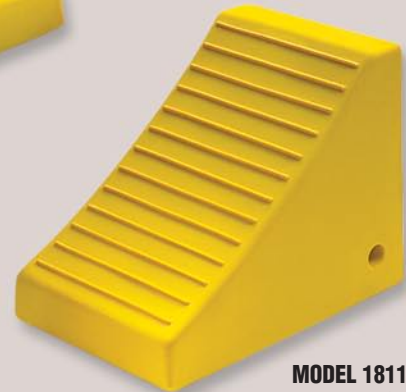
Marathon Le Tourneau Titan 2000 Series
Haul Truck With Model 1900 Mounting Bracket
And Two Model 1812 Checkers Roadblock
Wheel Chocks Mounted On Front Bumper.



MODEL 1809
Recommended for
Mine Support Equipment



MODEL 1810
Recommended for
Wheels up to 105" Diameter



MODEL 1811
Recommended for
Wheels Over 105" Diameter

1800 SERIES

MODEL	DESCRIPTION	LENGTH	WIDTH	HEIGHT	COLOR	WEIGHT
MC1809	For Mine Support Equipment Such as Lubrication Trucks and Heavy Maintenance Vehicles	12 in. (305 mm)	15 in. (381 mm)	11 in. (279 mm)	Yellow	12 lbs. (5.4 kg)
MC1810	For Mine Haul Trucks with Tire Sizes up to 105" (2667 mm) Diameter and Load Capacity up to 120 tons	18 in. (457 mm)	15 in. (381 mm)	10 in. (254 mm)	Yellow	33 lbs. (15 kg)
MC1811	For Mine Haul Trucks with Tire Sizes over 105" (2667 mm) Diameter and Load Capacity up to 240 tons; Tall Chock Design for Unusually Steep Haul Road Grades	22 in. (559 mm)	15 in. (381 mm)	17 in. (432 mm)	Yellow	40 lbs. (18.1 kg)
MC1812	For Mine Haul Trucks with Tire Sizes over 105" (2667 mm) Diameter and Load Capacity up to 240 tons; Chock Design for Normal Haul Road Grades	22 in. (559 mm)	15 in. (381 mm)	11 in. (279 mm)	Yellow	40 lbs. (18.1 kg)

MOUNTING BRACKET

MODEL	DESCRIPTION	SPECIFICATIONS	WEIGHT
MC1900	Universal Dual Mount Bracket Holds 2 each 1800 Series Chocks of Any Size - Primer Finish <i>Mounting Hardware NOT Included.</i>	36" (914 mm) Length Bracket Rod with 6" (152 mm) x 6" (152 mm) Mounting Plate	16 lbs. (7.3 kg)

WARNING!

Please refer to Wheel Chock User Guidelines on Page 4.

